

# Luxury new ground floor flat in Palma close to the golf

2814C - For Sale

€85,000

PALMA DE MALLORCA / Apartment & Penthouse



## Luxury new ground floor flat in Palma

This ground floor flat in Palma de Mallorca has a living area of 93 m<sup>2</sup> plus a terrace of 13 m<sup>2</sup>. It offers a living/dining room, a fully equipped kitchen, the master bedroom with bathroom en suite, a utility room, a further double bedroom, a single bedroom and a separate bathroom. An underground parking space and a storage room complete the offer.

Description of the residence:

“Palma Golf Residential” is a unique residential complex with 4 buildings and a total of 63 apartments with two, three or four bedrooms, underground parking spaces, beautiful community gardens and a beautiful community swimming pool. In addition, the residents have access to an exclusive spa and wellness area. Each apartment block offers three levels with ground floor apartments with private gardens, apartments with large terraces and penthouses with roof terraces. All apartments have spacious and bright rooms with plenty of natural light. The environmentally conscious construction, with a façade made of original materials from the Balearic Islands, achieves the best possible energy values for each apartment. The differently cut apartment types offer constructed interior areas of 90 to 160 square metres.

Bedrooms	3
Bathrooms	2
Area	93 m <sup>2</sup>
Terrace	13 m <sup>2</sup>
Parking	underground
Heating	under floor, air con h/c
Built year	2021

Further details:

Underfloor heating, air conditioning hot/cold, fully equipped kitchen, double glazed windows, bathroom en suite, built-in wardrobes, partly garden, penthouses with roof terrace, terraces, elevator, community swimming pool, community garden, underground garages, fitness and spa area.

Environment:

Live a unique experience in Palma Golf Residential. Enjoy your free time and relax in an exclusive and well connected natural environment, surrounded by 3 extensive golf courses. The Son Quint golf course, for example, is only 300 metres from the residence. Thanks to the strategic location of the residence and the good transport connections, the beautiful beaches of the island as well as the port of Palma are easily accessible from Palma Golf. Palma Golf Residential is only 5 minutes from the city centre, this proximity allows you to enjoy emblematic and lively places such as the Gothic Cathedral of Palma, Bellver Castle or Plaza Mayor.

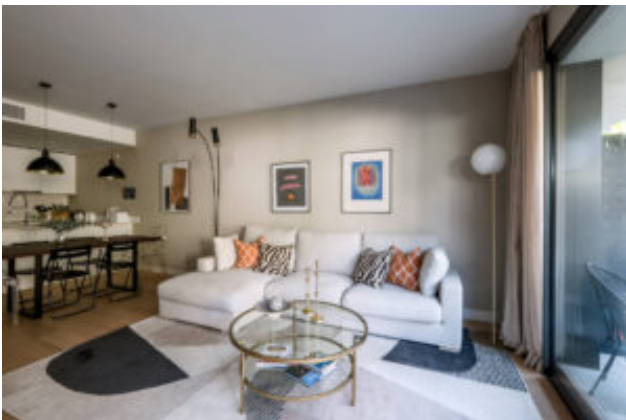
---

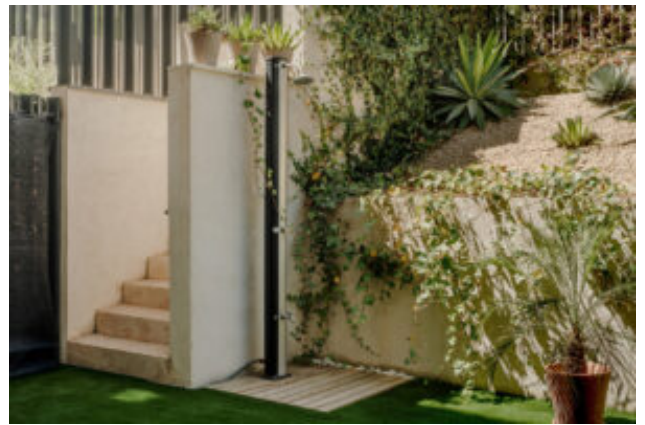
All information on the published properties is based on statements of third parties. NEW HOME MALLORCA has made every effort to ensure that the information contained in this information is true and correct, but does not accept any responsibility and disclaims any liability in respect of any errors, inaccuracies or misstatements contained therein. The broker's commission payable on the sale of a



# Additional Features

## Image Gallery













## Property Location

---



The map does not show the exact location of the property.

## Contact the Agent

---

**Carsten Scharmann**

**Website:** <http://newhomemallorca.com>

