

ADELNAS DE ES TRENC - SA RAPITA

9073 - For Sale

Price on request

>>> MALLORCA SOUTH › Sa Rapita / Apartment & Penthouse, Newly built apartments

NEWLY BUILT



ADELFA DE ES TRENC – NEW CONSTRUCTION IN SA RAPITA

These new-build flats in Sa Rapita will have two or three bedrooms of between 94 and 115 m². The ground floor flats will each have a terrace and corresponding private garden area and the penthouses will have a covered terrace and roof terraces of either 70 or 115 m².

All flats are sold with a private and covered parking space, which has an electric charging station.

Completion and handover of the flats is scheduled for summer 2025.

In construction phase 1, the purchase prices range from € 490,000 to € 750,000.

The residence will have beautifully landscaped communal garden areas, a magnificent saltwater-based communal swimming pool and a gym.

Other features include:

Electrical underfloor heating in the bathrooms, air conditioning hot/cold (heat pump) -compressor with inverter technology and high energy efficiency, large format ceramic tile flooring, double glazed aluminium windows, aluminium shutters in the bedrooms, built-in wardrobes, security entrance door, utility area, private garden (ground floor flats), roof terrace (penthouses), terrace, SAT TV – and internet connection in the living room and bedrooms (terrestrial TV antenna and satellite dish with 2 polarities), storage room.

Private car parking with pre-installation for electric vehicle charging under the external solar pergolas.

The kitchen will have Bosch or similar appliances with induction hob, extractor bonnet or filter unit and electric oven. Stainless steel sink and Hansgrohe mixer tap.

Bathrooms will be fitted with Hansgrohe taps, sanitary ware and modern white furniture. Shower mixers from Hansgrohe.

The flat will be equipped with a ventilation system to ensure healthy indoor air and compliance with technical building regulations.

SA RAPITA

In Sa Rapita (Sa Vinyola), in the south of Mallorca in the immediate vicinity of the dreamlike sandy beach Es Trenc, approx. 40 minutes by car from Palma

Built year	2021
------------	------

Additional Features

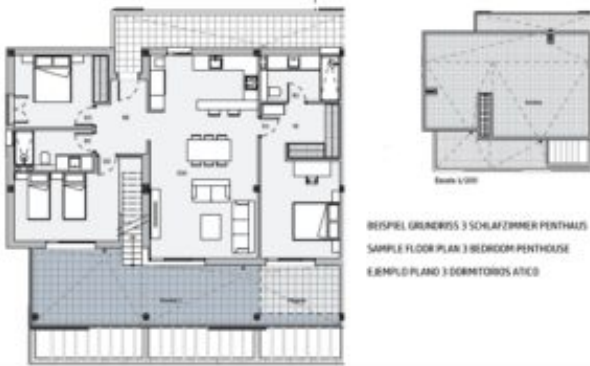
Image Gallery











Property Location



In der Karte wird nicht der exakte Standort der Immobilie angezeigt.

Contact the Agent

Carsten Scharmann

Website: <http://newhomemallorca.com>

